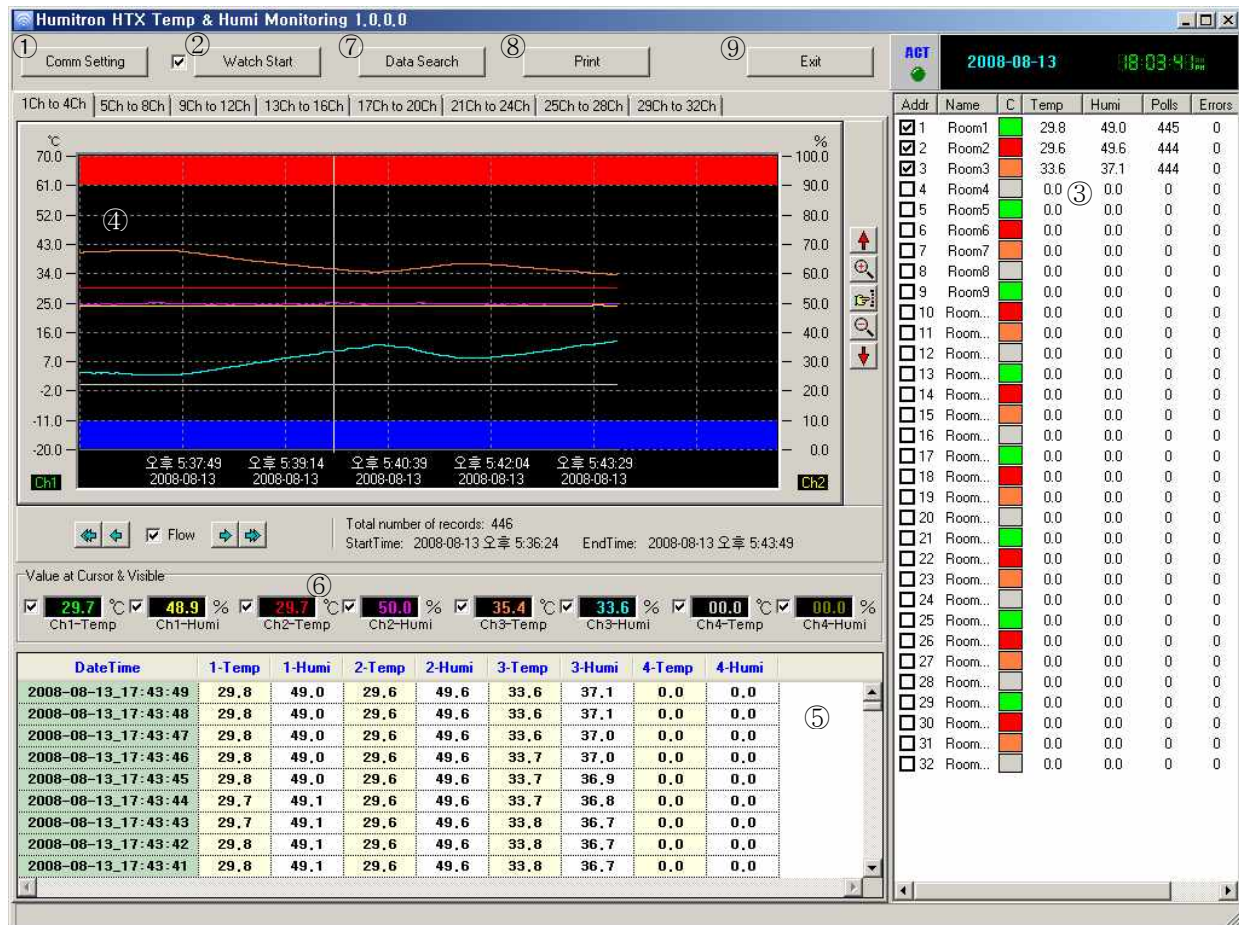


[illegible]

## 1. Constitution of Main Screen



※ Main screen is divided into 8 groups and each group shows 4 channels. Each address (Addr) has the value of temperature and humidity.

### ① Comm Setting

The screenshot shows the Comm Setting dialog box. It contains two sections: Comm Config and Cycle Config. The Comm Config section has fields for Port#, Setting, Timeout, and Comm. error count. The Cycle Config section has fields for Comm. Cycle and Graph Cycle, each with a unit selector (M or S).

[ Comm Config ]

Port# : Comm. Port in Use

Setting : Baud Rate, Parity Bits, Data Bits, Stop Bits

Timeout : Comm. Timeout

Comm. Error count : Surplus value to display "Comm. Error" in the screen in case of any comm. error.

[ Cycle Config ]

Comm. (Log) Cycle : Setting comm. (Log) cycle

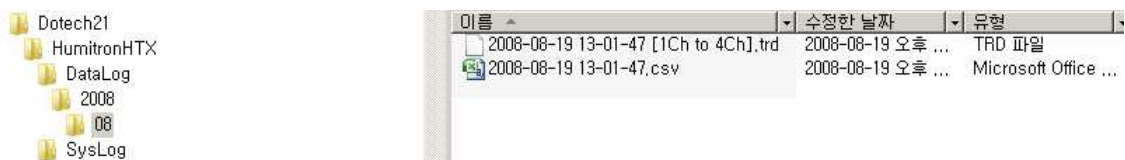
Graph Cycle : Setting cycle to draw trend graph

② Watch Start

Please click “Watch Start” button in case of proper comm. setup and it shall start to monitor according to setup value for cycle at Comm. Setup menu.

(For example, if you set 5 sec for comm.. (log) cycle, 10 sec. for graph cycle, comm.. value shall be displayed in ③ value for connected equipment, ⑤ value per time for temperature/humidity for every 5 sec. and ④ graph window for every 10 sec.)

You can choose whether you save log or not with check box in left side of the button.



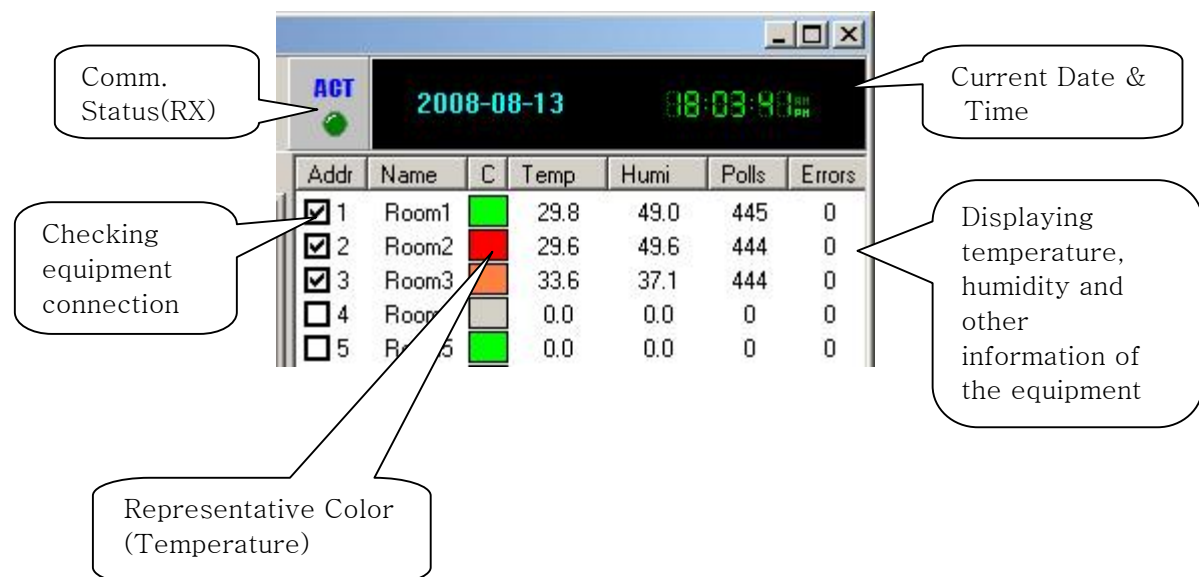
Default location for saved file is programFilesWDotech21WHumitronHTXWDataLog WYYYYWMMW.

Also, its extension is “.csv” for Microsoft Excel file.

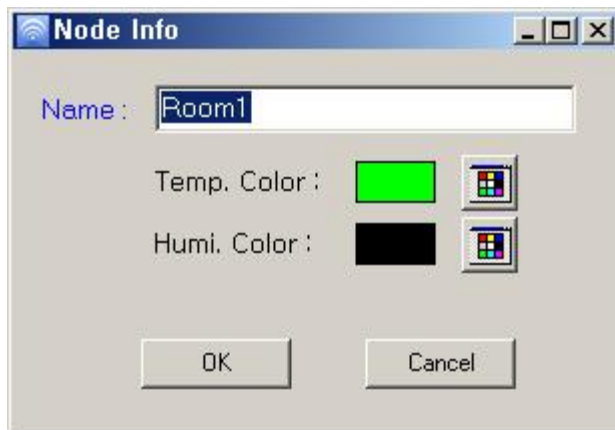
“.trd” for graph file (for the compatibility with graph view program in the future)

※ If the graph cycle is 1 sec, it is saved for 24 hours. After 24 hours, it shall start with deleting screen.

③ It displays the status of 1~32 units of equipments .



If you choose the list and click right button or double-click, you can see the following input window.



You can change the name of equipment on input window. After changing the name, please click "OK".

④ Trend Graph



It resets the graph into default magnification



If you check, it displays the last location of graph by moving 90%.



It moves to the right as far as X grid (or x4) of the graph



It moves to the left as far as X grid (or x4) of the graph.

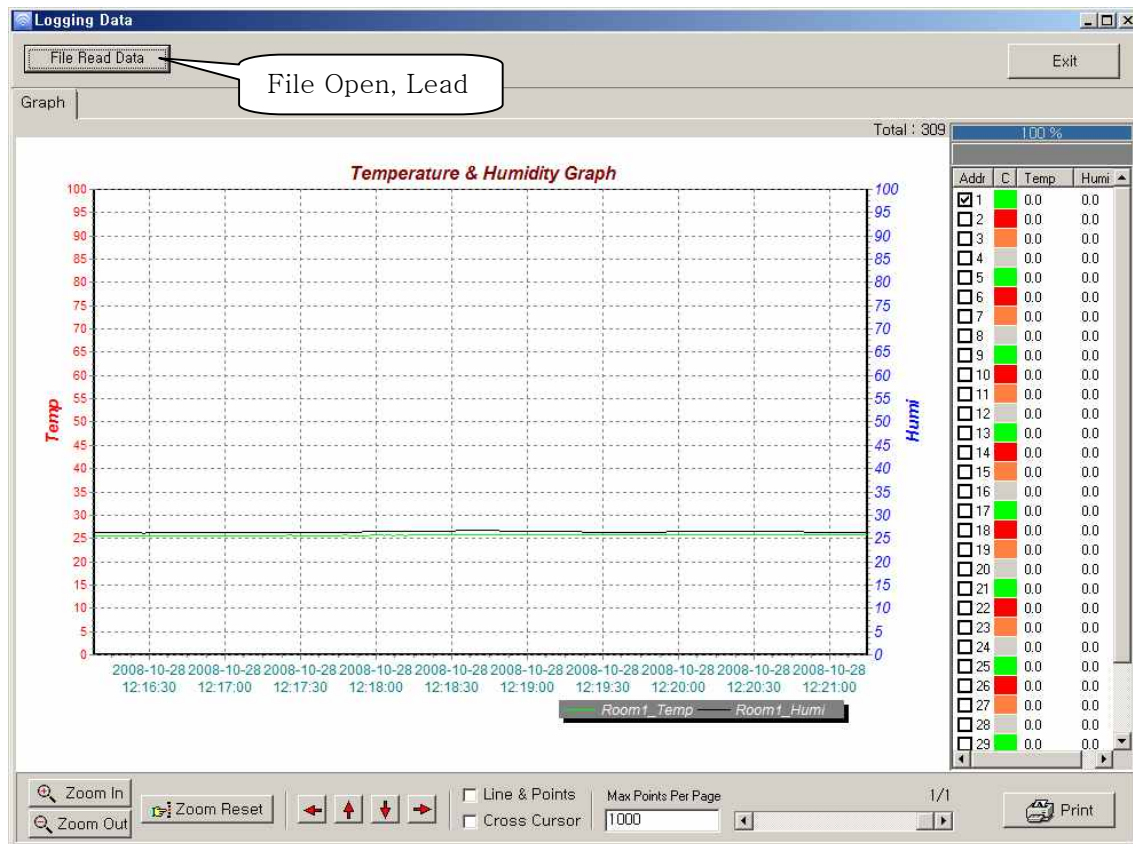
⑤ Temperature / Humidity Log Table

It displays temperature / humidity of the equipment by monitoring in setup cycle.  
The first value in the list is the last value inputting to the equipment.

⑥ Temperature / Humidity Value Display

It displays the related value if you place the cursor on the graph.

⑦ Data Search



You can open and check the previous saved file (\*.csv).

※ It might take time to open the file according to its size .

⑧ Print

If you click the button, print menu is appeared and then you can setup the printer available and print it.

The range of printing is trend graph

⑨ Exit

It terminates program.

The changed setup value during execution is saved together.