

# HTX62C Series

## RH & Temperature Transmitters With Display, Communication

### FEATURES

- Applied for MEMS technology
- Compact & Slim size
- Digital Calibration
- Max.,Min. Value Display
- Error Display
- IP65 Water-proof
- Embedded RS485(Modbus)

### APPLICATIONS

- HVAC
- Clenroom
- Dehumidifier
- Humidifier
- Precision Air-Conditionor
- Building Automation
- Garden(Farm)
- Lab/Test Room
- Museum
- Industrial
- Semi-Conductor
- Train
- Pharmacy
- Factory
- Printing
- Enviroment
- Weather monitoring
- Road,way
- Base station

HUMITRON® HTX62C series is an ideal product line for precise measuring of temperature, humidity and dew point temperature at various industrial applications. Also, it is possible to connect with upper system directly through embedded

RS485 communication function and to show temperature and humidity on its own LED display at the same time.

Snap on-off type housing and plug-in terminal is applied for easy installation and wiring.

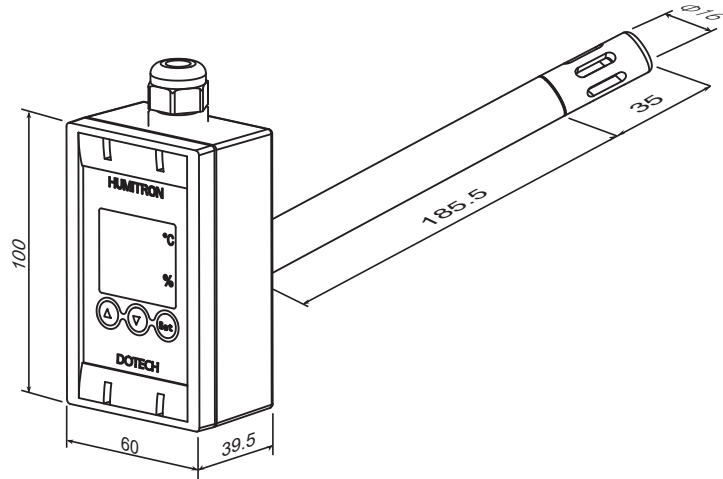
Users can choose wall type, duct type or remote probe type according to their needs.



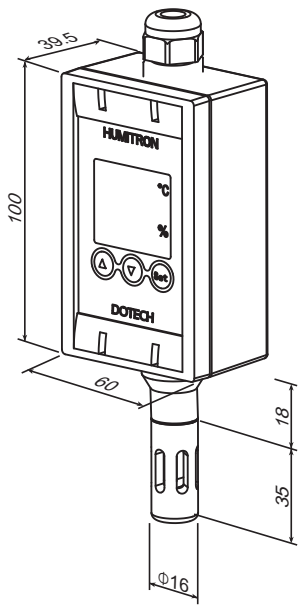
### SPECIFICATIONS

Item		Model	HTX62C	HTX62D
Humidify & Dewpoint	Range		0...100%RH (Non-Condensation)	-40...60°C (Dewpoint)
	Accuracy		± 1.8%RH	-
	Repeatability		± 0.1%RH	-
	Response		Max. 10 Sec. : 1/e (63%) at 25°C, 1m/s air	
	Output		4 ... 20mA	
Temperature	Range		-20 ... 80 °C	
	Accuracy		25 °C @ ± 0.3 °C	
	Repeatability		± 0.1 °C	
	Response		5 ... 30Sec. , 1/e (63%)	
	Output		4 ... 20mA (-20 ... 80°C : Output Range Settable)	
Self Diagnostic			Sensor Fault Detect	
Power Supply			DC24V, Max 0.2A	
Dimension(W×H×Dmm)			60×100×40, Cablegrand & Probe exclusion	
Communication Method			Modbus RTU/ASCII, 2400, 4800, 9600, 19200, 38400 BPS	
Cable Grand			PG9 (Bright Black, Anti-Drag, 3 ... 6.5mm)	
Wiring method			4-pin X 2ea Terminal Block,, 14 ... 22AWG	
Storage Condition			-25 ... 60°C, Non-condensation	
Operation Condition			-20 ... 55°C 0 ... 95%RH	
Housing			ABS, Water-proof(IP65)	
Weight			60g	

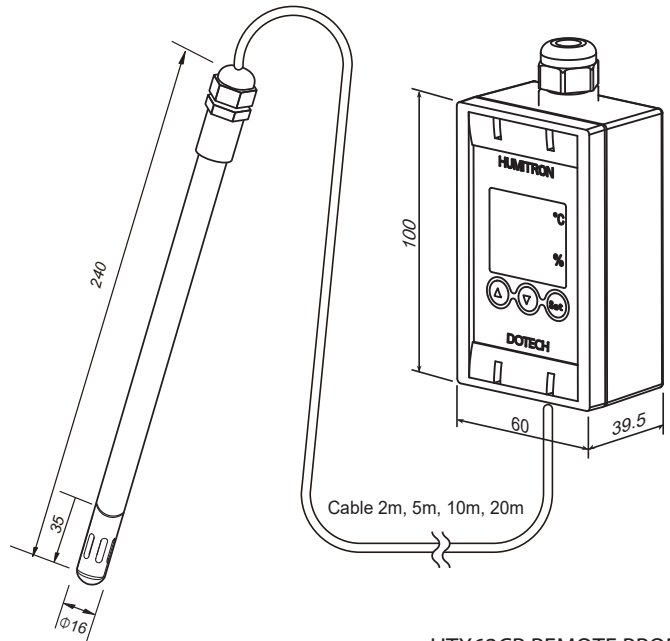
## Full Dimensions of each types



<HTX62CD DUCT MOUNT >

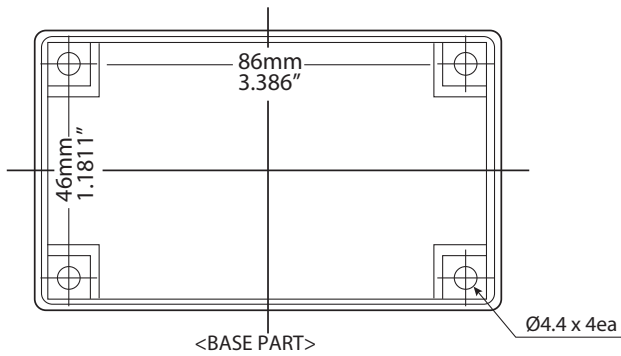


<HTX62CW WALL MOUNT>



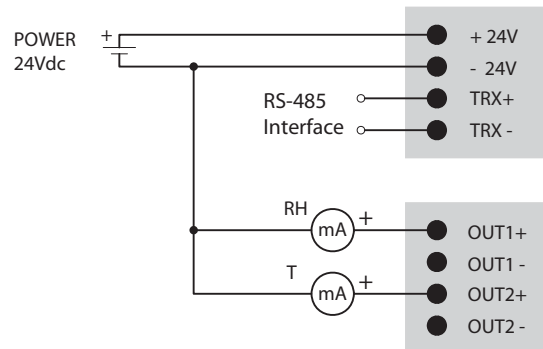
<HTX62CR REMOTE PROBE >

## Housing / Mounting Dimension



<BASE PART>

## Connection Diagram



## Ordering Guide

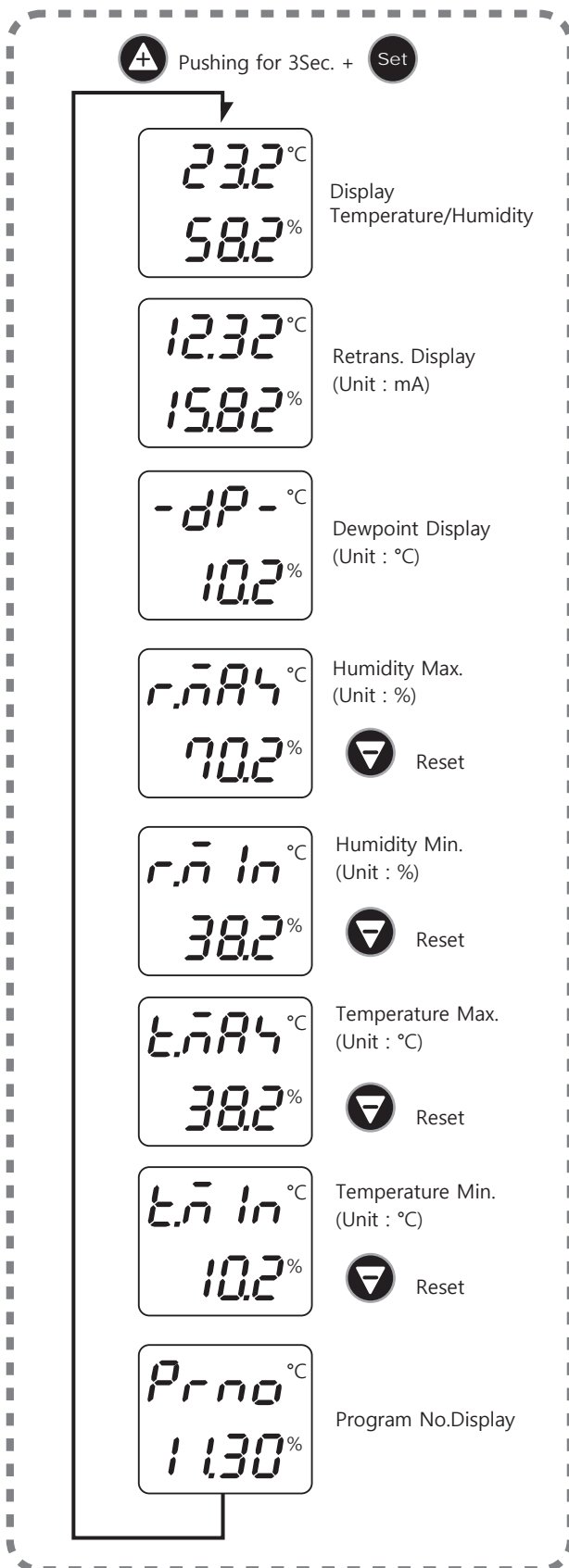
Basic No.	Series	Mount	Type	Cable length	Description
HTX					HUMITRON HTX Series Transmitters
	62C				RH : $\pm 2.0\%$ , Temp : $\pm 0.3^\circ\text{C}$
	62D				Dewpoint & Temperature
		W			Wall Mount Type
		D			Duct Mount Type
		R			Remote Probe Type (2m, 5m, 10m, 20m)
				00	Display Only
				10	4...20mA Output Function
				01	RS485 MODBUS Communication Function
				11	4...20mA Output & Communication Function

## Parameter List

Item	Name Of Parameter	Name Of Parameter	Setting Range (Description)	Initial Value	User Setting Value
1	<i>r.oFS</i>	Measure humidity offset value	-10.0 ... +10.0 %	0.0 %	
2	<i>r.SCH</i>	Max. humidity of Transmission output Scale (at 20mA)	0 ... 100 %	100 %	
3	<i>r.SCL</i>	Min. humidity of Transmission output Scale (at 4mA)	0 ... 100 %	0 %	
4	<i>r.0oF</i>	Offset humidity of Transmission output	-3.00 ... + 3.00 mA	0.00 mA	
5	<i>t.oFS</i>	Measure temperature offset value	-10.0 ... +10.0 °C	0.0 °C	
6	<i>t.SCH</i>	Max. temperature of Transmission output Scale (at 20mA)	-40 ... 120 °C	80 °C	
7	<i>t.SCL</i>	Min. temperature of Transmission output Scale (at 4mA)	-40 ... 120 °C	-20 °C	
8	<i>t.0oF</i>	Offset temperature of Transmission output	-3.00 ... + 3.00 mA	0.00 mA	
9	<i>C.Adr</i>	Address for End Address	1 ... 64	1	
10	<i>C.Pro</i>	Protocol Mode	0 : MODBUS RTU 1 : MODBUS RTU2 2 : MODBUS RTU3	0	
11	<i>C.bPS</i>	Baud-rate	0 : 600, 1 : 1200 2 : 2400, 3 : 4800 4 : 9600, 5 : 19200 6 : 38400	4 : 9600 bps	
12	<i>C.Pr1</i>	Parity	0 : None 1 : Even 2 : Odd	0 : None	
13	<i>C.StP</i>	Stop bit	1 : 1-bit 2 : 2-bit	1 : 1-bit	
14	<i>C.dLn</i>	Data bit	7 : 7-bit 8 : 8-bit (fixed)	8 : 8-bit	

## Operation Sequence and Parameter map

### o Set display mode



### o Set point chage mode

