

HTX62x Series

Humidity, Temperature, Dewpoint, Absolute OR Enthalpy

FEATURES

- Applied for MEMS technology
- Compact & Slim size
- Digital Calibration
- Max.,Min. Value Display
- Error Display
- IP65 Water-proof
- Embedded RS485(Modbus)

APPLICATIONS

- HVAC
 - Cleanroom
 - Dehumidifier
 - Humidifier
 - Precision Air-Conditionor
 - Building Automation
 - Garden(Farm)
 - Lab/Test Room
 - Museum
- Industrial
 - Semi-Conductor
 - Train
 - Pharmacy
 - Factory
 - Printing
- Enviroment
 - Weather monitoring
 - Road,way
 - Base station

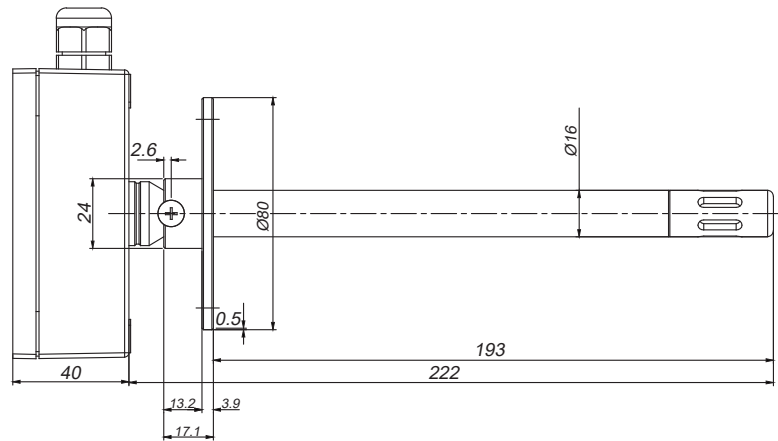
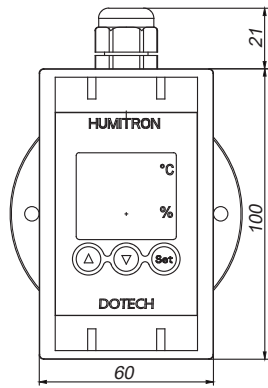
HUMITRON® HTX62x series is an ideal product line for precise measuring of temperature, humidity and dew point temperature at various industrial applications. Also, it is possible to connect with upper system directly through embedded RS485 communication function and to show temperature and humidity on its own LED display at the same time. Snap on-off type housing and plug-in terminal is applied for easy installation and wiring. Users can choose wall type, duct type or remote probe type according to their needs.



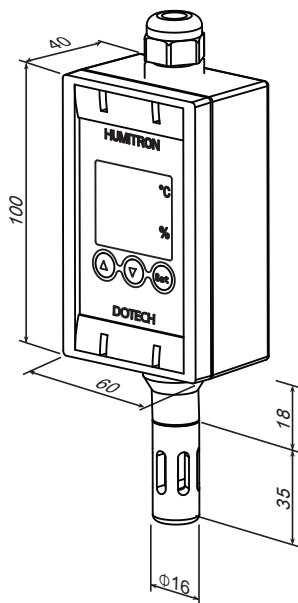
SPECIFICATIONS

Item	Model	HTX62x(W/D/R)
Power Supply		DC24V, Max 0.2A
Dimension(W×H×Dmm)		60×100×40, Cable Grand and Probe exclusion
Communication Method		Modbus RTU/ASCII, 2400, 4800, 9600, 19200, 38400 BPS
Cable Grand		PG9 (Bright Black, Anti-Drag, 3...6.5mm)
Wiring method		4-Pin X 2ea Terminal Block, 14...22AWG
Storage Condition		-25...60°C, Non-condensation
Operation Condition		-20...55°C 0...95%RH
Housing		ABS, Water-proof(IP65)
Weight		60g
Self Diagnostic		Sensor Fault Select
Humidity	Range	0...100%RH(Non-condensation)
	Accuracy	±3.0%RH
	Repeatability	±0.1%RH
	Response	Max. 10sec. : 1/e (63%) at 25°C, 1m/s air
	Output	4...20mA
Temoerature	Range	-20...80°C
	Accuracy	25°C @ ±0.3°C
	Repeatability	±0.1°C
	Response	5...30sec., 1/e (63%)
	Output	4...20mA (-20...80°C : Output Range Settable)
Dewpoint	Range	-40...60°C (Dewpoint)
	Response	Max. 10sec. : 1/e (63%) at 25°C, 1m/s air
	Output	4...20mA
Absolute humidity	Range	0...290 g/m ³
	Accuracy	±3.0%RH
	Response	5...30sec., 1/e (63%)
	Output	4...20mA
Enthalpy	Range	-20...1500kj/kg
	Response	5...30sec., 1/e (63%)
	Output	4...20mA

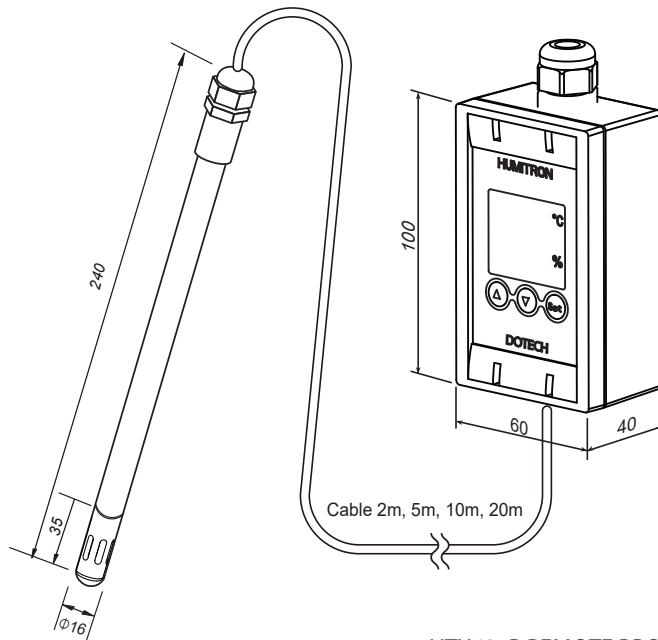
Full Dimensions of each types



<HTX62xD DUCT MOUNT >

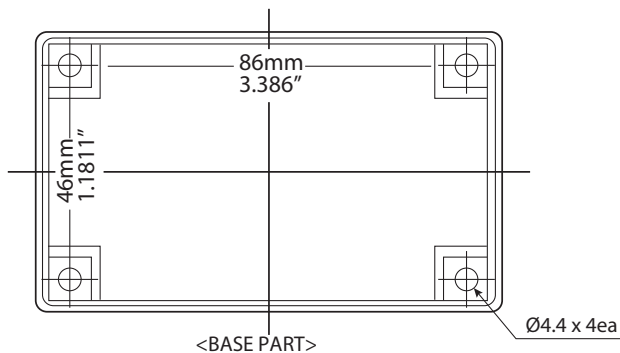


<HTX62xW WALL MOUNT>



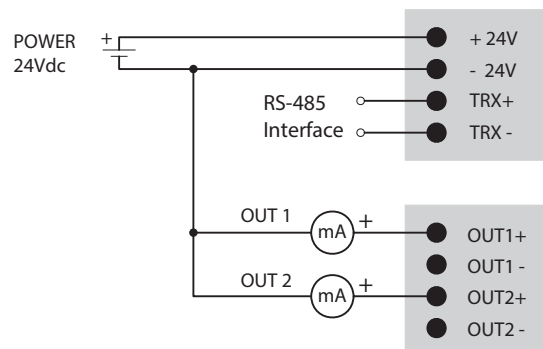
<HTX62xR REMOTE PROBE >

Housing / Mounting Dimension



<BASE PART>

Connection Diagram



Parameter List

Add	Name Of Parameter	Description	Setting Range	Initial Value	Model
40001	<i>r.oFS</i>	Measure humidity offset value	-50.0 ... +50.0 %	0.00 %	HTX62C
40002	<i>r.SCH</i>	Max. humidity of Transmission output Scale (at 20mA)	0 ... 100%	100%	
40003	<i>r.SCL</i>	Min. humidity of Transmission output Scale (at 4mA)	0 ... 100%	100%	
40004	<i>r.OoF</i>	Offset humidity of Transmission output	-3.00 ... 3.00 mA	0.00 mA	
40001	<i>d.oFS</i>	Measure dewpoint offset value	-50.0 ... +50.0 %	0.00 %	HTX62D
40002	<i>d.SCH</i>	Max. dewpoint of Transmission output Scale (at 20mA)	-40 ... 120 °C	60 °C	
40003	<i>d.SCL</i>	Min. dewpoint of Transmission output Scale (at 4mA)	-40 ... 120 °C	-40 °C	
40004	<i>d.OoF</i>	Offset dewpoint of Transmission output	-3.00 ... +3.00 mA	0.00 mA	
40001	<i>A.oFS</i>	Measure Absolute humidity offset value	0 ... 100.0 g/m ³	0.0 g/m ³	HTX62A HTX62B
40002	<i>A.SCH</i>	Max. Absolute humidity of Transmission output Scale (at 20mA)	0 ... 250 g/m ³	250 g/m ³	
40003	<i>A.SCL</i>	Min. Absolute humidity of Transmission output Scale (at 4mA)	0 ... 250 g/m ³	0 g/m ³	
40004	<i>A.OoF</i>	Offset Absolute humidity of Transmission output	-3.00 ... +3.00 mA	0.00 mA	
40001	<i>E.oFS</i>	Measure enthalpy offset value	-20.0 ... +100.0 kJ/kg	0.0 kJ/kg	HTX62E
40005					HTX62A
40002	<i>E.SCH</i>	Max. enthalpy of Transmission output Scale (at 20mA)	-20 ... 800 kJ/kg	800 kJ/kg	HTX62E
40006					HTX62A
40003	<i>E.SCL</i>	Min. enthalpy of Transmission output Scale (at 4mA)	-20 ... 800 kJ/kg	800 kJ/kg	HTX62E
40007					HTX62A
40004	<i>E.OoF</i>	Offset enthalpy of Transmission output	-3.00 ... +3.00 mA	0.00 mA	HTX62E
40008					HTX62A
40005	<i>t.oFS</i>	Measure temperature offset value	-50.0...+50.0 °C	0.0 °C	HTX62C HTX62D HTX62B HTX62E HTX62T
40006	<i>t.SCH</i>	Max. temperature of Transmission output Scale (at 20mA)	-40 ... 120 °C	80 °C	
40007	<i>t.SCL</i>	Min. temperature of Transmission output Scale (at 4mA)	-40 ... 120 °C	-20 °C	
40008	<i>t.OoF</i>	Offset temperature of Transmission output	-3.00 ... +3.00 mA	0.00 mA	
40009	<i>E.Adr</i>	Address for End Address	1 ... 64	1	
40010	<i>E.Pro</i>	Protocol Mode	0 : MODBUS RTU 1 : MODBUS RTU2 2 : MODBUS RTU3	0	
40011	<i>E.bPS</i>	Baud-rate	0 : 600, 1 : 1200 2 : 2400, 3 : 4800 4 : 9600, 5 : 19200 6 : 38400	4 : 9600	
40012	<i>E.Pri</i>	Parity	0 : None 1 : Even 2 : Odd	0 : None	
40013	<i>E.STP</i>	Stop bit	1 : 1-bit 2 : 2-bit	1 : 1-bit	
40014	<i>E.dLn</i>	Data bit	7 : 7-bit 8 : 8-bit(fixed)	8 : 8-bit	
40015	<i>n.dIS</i>	Display period	0 ... 5.0 sec	0.5 sec	

Add	Description	Unit	Inside data	Real data	Model
40020	Humidity transmission output current value	mA	4.00 ~ 20.00	400 ~ 2000	HTX62C
	Dew point transmission current value				HTX62D
	Absolute Humidity Transmission Output Current Value				HTX62B
	Enthalpy transmission output current value				HTX62A
40021	Temperature Transfer Output Current Value	mA	4.00 ~ 20.00	400 ~ 2000	HTX62E
	Enthalpy transmission output current value				HTX62C
40022	Humidity measurements	%	0 ~ 100.0	0 ~ 1000	HTX62A
40023	Temperature measurements	°C	-20.0 ~ 80.0	-200 ~ 800	HTX62C
					HTX62D
					HTX62B
					HTX62E
40024	Dew point temperature value	°C	-40.0 ~ 60.0	-400 ~ 600	HTX62D
40026	Absolute humidity value	g/m ³	0 ~ 250		HTX62B
					HTX62A
40027	Enthalpy value	kJ/kg	-20 ~ 800		HTX62E
					HTX62A

Ordering Guide

Basic No.	Series	Mount	Type	Cable length	Description
HTX					HUMITRON HTX Series Transmitters
	62C				OUT1 : Humidity, OUT2 : Temperature
	62D				OUT1 : Dewpoint, OUT2 : Temperature
	62T				OUT1 : -, OUT2 : Temperature
	62B				OUT1 : Absolute humidity, OUT2 : Temperature
	62E				OUT1 : Enthalpy, OUT2 : Temperature
	62A				OUT1 : Absolute humidity, OUT2 : Enthalpy
	62U				OUT1 : Humidity, OUT2 : Temperature, Wet-bulb : Display
		W			Wall Mount Type
		D			Duct Mount Type
		R			Remote Probe Type (2m, 5m, 10m, 20m)
			00		Display Only
			01		RS485 MODBUS Communication Function
			10		4...20mA Output Function
			11		4...20mA Output & Communication Function

Operation Sequence and Parameter map

